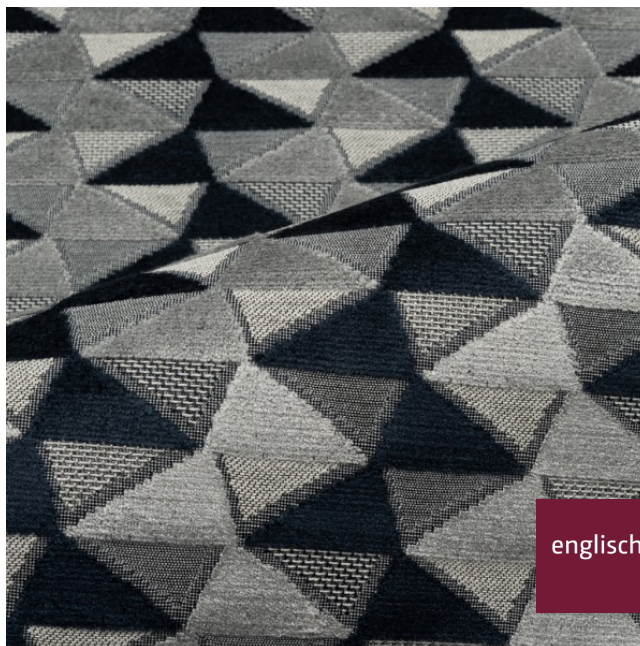


Textil

textile upholstery fabric



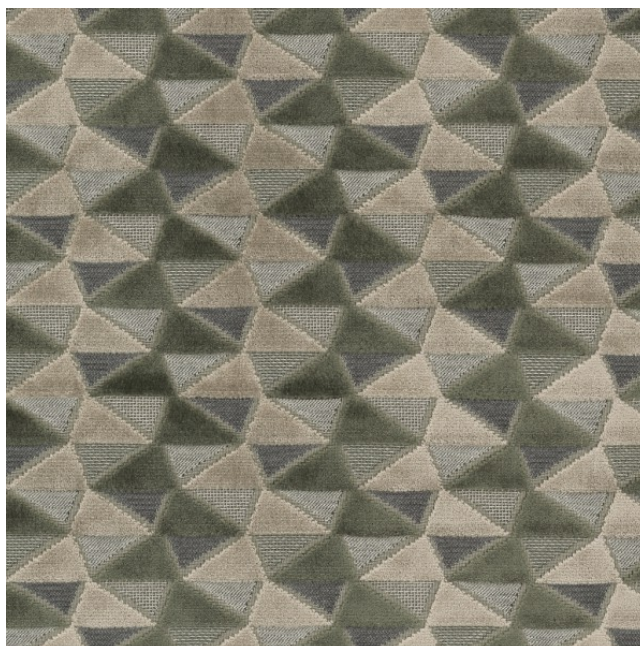
| | |
|--|---|
| Breite/Höhe <i>width/height</i> | ca. 140 cm |
| Gewicht <i>weight</i> | 810 g/m² |
| Material <i>material</i> | 40% CV, 35% CO, 25% PES FR |
| Pflegeanleitung <i>care instructions</i> | feucht abwischen / clean with a damp cloth |



englisch dekor
vienna

A5366/140

| | |
|--|--|
| Rapporthöhe <i>repeat height</i> | ca. 23 cm |
| Rapportbreite <i>repeat width</i> | ca. 35 cm |
| Schwer brennbar <i>flame retardant</i> | Ja/yes EN 1021 1+2 BS5852 - SOURCES 0+1 ÖNORM B3825 ÖNORM A3800 CLASSE UNO IMO - FTP PART 8 |
| Lichtechtheit <i>fastness to light</i> | 5 EN ISO 105-B02 |
| Reibechtheit (trocken) <i>fastness to rubbing (dry)</i> | 4-5 EN ISO 105-X12 |
| Reibechtheit (nass) <i>fastness to rubbing (wet)</i> | 4 EN ISO 105-X12 |
| Pilling <i>pilling</i> | 4 EN ISO 12945-2 |
| Scheuertouren Martindale <i>abrasion resistance Martindale</i> | 35000 EN ISO 12947 |
| Garntyp <i>yarn type</i> | gezwirnt <i>twisted</i> |
| Färbemethode <i>dyeing method</i> | Garnfärbung <i>yarn dyed</i> |
| Nahtschibewiderstand <i>resistance to seam slippage</i> | 3MM EN ISO 13936-2 |



Vorbehaltlich Druck- und Satzfehler. Die Farben der Abbildungen können von der tatsächlichen Produktfarbe abweichen.

Typing and printing errors reserved. The color(s) of the actual product may slightly differ from those shown on this page.

Möbelstoff/Upholstery FR "albertina"

A5361-A5367/140

Textil

textile upholstery fabric



Öko-tex Standard 100
öko-tex Standard 100

Ja/yes

Samt/Velours
velvet

Ja/yes