

# Möbelstoff/Upholstery FR "wooly II"

A3407-A3417/140

## Textil

textile upholstery fabric



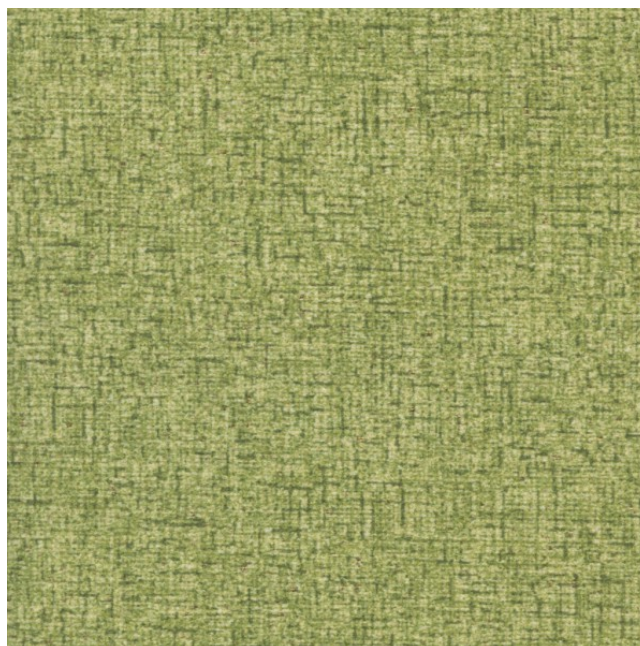
|  |   |
|--|---|
| <b>Breite/Höhe</b><br><i>width/height</i>          | <b>ca. 140 cm</b>   |
| <b>Gewicht</b><br><i>weight</i>                    | <b>440 g/m<sup>2</sup></b>                                |
| <b>Material</b><br><i>material</i>                 | <b>35% CO, 27% PES FR, 18%<br/>ACRYLAT, 15% PA, 5% AF</b> |
| <b>Pflegeanleitung</b><br><i>care instructions</i> | <b>feucht abwischen /<br/>clean with a damp cloth</b>     |



englisch dekor  
vienna

A3410/140

|  |  |
|--|--|
| <b>Schwer brennbar</b><br><i>flame retardant</i>                         | <b>Ja/yes</b><br>BS5852 - SOURCES 0+1<br>EN 1021 1+2<br>ÖNORM B3825<br>ÖNORM A3800<br>CLASSE UNO<br>IMO - FTP PART 8 |
| <b>Fleckschutz</b><br><i>stain repellent</i>                             | <b>Ja/yes</b>  |
| <b>Easy Clean</b><br><i>easy clean</i>                                   | <b>Ja/yes</b>  |
| <b>Lichtechtheit</b><br><i>fastness to light</i>                         | <b>5-6</b><br>EN ISO 105-B02   |
| <b>Reibechtheit (trocken)</b><br><i>fastness to rubbing (dry)</i>        | <b>4</b><br>EN ISO 105-X12   |
| <b>Reibechtheit (nass)</b><br><i>fastness to rubbing (wet)</i>           | <b>4</b><br>EN ISO 105-X12   |
| <b>Pilling</b><br><i>pilling</i>   | <b>5</b><br>EN ISO 12945-2   |
| <b>Scheuertouren Martindale</b><br><i>abrasion resistance Martindale</i> | <b>200000</b><br>EN ISO 12947  |
| <b>Antibakteriell</b><br><i>antibacterial</i>                            | <b>Ja/yes</b>  |
| <b>Garntyp</b><br><i>yarn type</i>                                       | <b>mehrfach</b><br><i>ply</i>  |
| <b>Bindung</b><br><i>weave</i>   | <b>Leinwand</b><br><i>plain</i>  |



Vorbehaltlich Druck- und Satzfehler. Die Farben der Abbildungen können von der tatsächlichen Produktfarbe abweichen.

Typing and printing errors reserved. The color(s) of the actual product may slightly differ from those shown on this page.

## Textil

*textile upholstery fabric*



| <b>Färbemethode</b><br><i>dying method</i>                         | <b>STÜCKFÄRBER</b>               |
|--|----------------------------------|
| <b>Zugfestigkeit Kette</b><br><i>tensile strength warp</i>         | <b>350</b><br>EN ISO 13934-1     |
| <b>Zugfestigkeit Schuss</b><br><i>tensile strength weft</i>        | <b>350</b><br>EN ISO 13934-1     |
| <b>Weiterreißfestigkeit Kette</b><br><i>tear strength warp</i>     | <b>48.52 N</b><br>EN ISO 13937-3 |
| <b>Weiterreißfestigkeit Schuss</b><br><i>tear strength weft</i>    | <b>49.23 N</b><br>EN ISO 13937-3 |
| <b>Nahtschiebewiderstand</b><br><i>resistance to seam slippage</i> | <b>6MM</b><br>EN ISO 13936-2     |
| <b>Öko-tex Standard 100</b><br><i>öko-tex Standard 100</i>         | <b>Ja/yes</b>                    |
| <b>Samt/Velours</b><br><i>velvet</i>                               | <b>Ja/yes</b>                    |